

CHIUSINI IN INOX - RIBASSATI

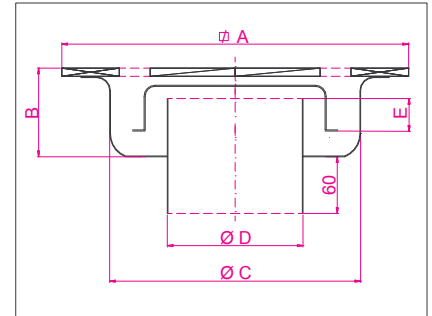


**CHIUSINO IN ACCIAIO INOX
200 x 200 D. 63**

COD. 840A-R

DIMENSIONI PRINCIPALI (mm) MAIN MEASUREMENTS (mm)					PORTATA SCARICO OUTLET CAPACITY
□	B	ØC	ØD	E	lt7min
200	55	150	63	20	46

PORTATA (Kg) CAPACITY (Kg)	
CARICO CONCENTRATO CONCENTRATED LOAD	CARICO DISTRIBUITO DISTRIBUTED LOAD
850	4.600



**PORTATA CARICO
DISTRIBUITO
KG. 4.600**

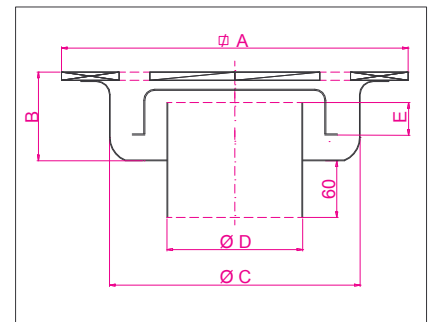


**CHIUSINO IN ACCIAIO INOX
250 x 250 D. 80/100**

COD. 840D-R

DIMENSIONI PRINCIPALI (mm) MAIN MEASUREMENTS (mm)					PORTATA SCARICO OUTLET CAPACITY
□	B	ØC	ØD	E	lt7min
250	85	195	80	25	80

PORTATA (Kg) CAPACITY (Kg)	
CARICO CONCENTRATO CONCENTRATED LOAD	CARICO DISTRIBUITO DISTRIBUTED LOAD
850	6500



**PORTATA CARICO
DISTRIBUITO
KG. 6.500**

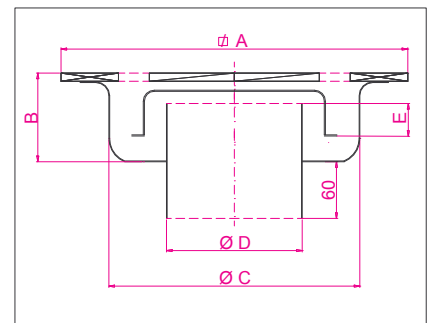


**CHIUSINO IN ACCIAIO INOX
300 x 300 D. 80/100**

COD. 840B-R

DIMENSIONI PRINCIPALI (mm) MAIN MEASUREMENTS (mm)					PORTATA SCARICO OUTLET CAPACITY
□	B	ØC	ØD	E	lt7min
300	85	220	100/ 110	25	130

PORTATA (Kg) CAPACITY (Kg)	
CARICO CONCENTRATO CONCENTRATED LOAD	CARICO DISTRIBUITO DISTRIBUTED LOAD
850	6500



**PORTATA CARICO
DISTRIBUITO
KG. 6.500**